



Effective GBV Programming & Resource Modalities

MENA Region – Syria & Iraq Crisis

No Lost Generation Donor Briefing
on Gender Based Violence
Amman, Jordan
May 2018

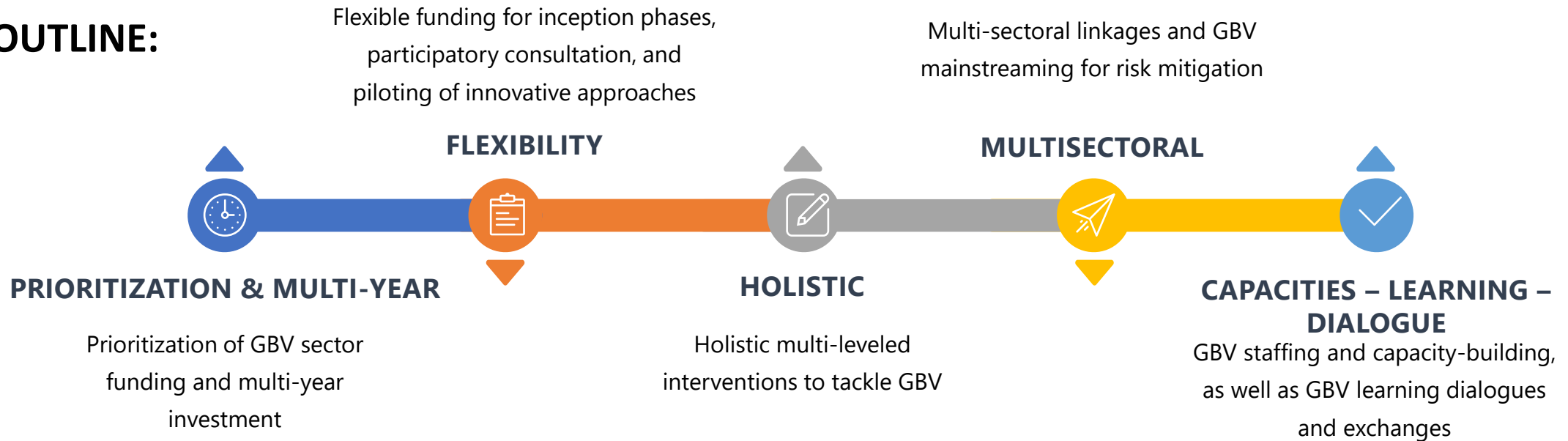
Olivia Gimeno – Plan International, GBV & SRHR
Ridiona Stana – World Vision, Child Protection

OVERVIEW



OBJECTIVE: Share effective strategies from the region to support GBV programming

OUTLINE:



World Vision



Prioritization of GBV Sector & Multi-Year Funding



Lebanon Example



- Interruption and reduction of GBV programmes, including case management services
- Immediate drastic decrease of GBV reported incidents
- GBVIMS analysis for the quarter was not possible



Learning

1. Demonstrates impact of GBV service provision (and negative impact of funding interruption)
2. Reduction affected both GBV prevention and response, as well as GBV data analysis of trends
3. GBV coordination strategies and donor support helped to analyze and bridge gaps, as well as minimize harm related to handover of open cases

Lebanon GBVIMS Steering Committee, February 2018



World Vision



Prioritization of GBV Sector & Multi-Year Funding cont'd



Importance of Prioritization of GBV Sector for Funding



Aligned with country and regional **response plans priorities**



GBV risks and violations only continuing to increase, as consistently highlighted in assessment findings



While services have expanded and been strengthened, there are still critical **gaps in service provision**, in particular case management and medical care

UKAid Study (2013) on Multi-Year Humanitarian Funding:

- Lower operational costs
- Flexibility for pre-positioning and early response
- More strategic partnerships
- Better planning

“The most common type of violence in our community is the violence against girls and sexual violence” (FGD with Girls 12-17 years, Idleb, HNO)

Promoting Predictable & Continuous Multi-Year Funding

Ensures **GBV life-saving services**



Allows for a **longer-term phased** approach to GBV



Retention of qualified GBV staffing



Allows time **and flexibility to pilot, innovate, and adapt** approaches for more effective programming



Flexible Funding for Participation, Learning, & Adaptation



Investing in Flexible Programming & Learning Driven by Adolescent Girls & Boys



INCEPTION PHASE

Adapt and pilot models for each context in consultation with the targeted communities (in particular adolescent girls and boys)



PARTICIPATORY CONSULTATIONS with GIRLS & BOYS

Inform GBV program design, implementation, & monitoring & promote their empowerment



PILOTING & ADAPTING

Allow for feedback, learning, and innovation of GBV approaches



- Providing flexible funding and support for piloting/innovation of new approaches
- Investing resources for participatory consultation and engagement

Ex. Plan & CARE joint assessment on GBV & SRHR modalities in Jordan with adolescent girls

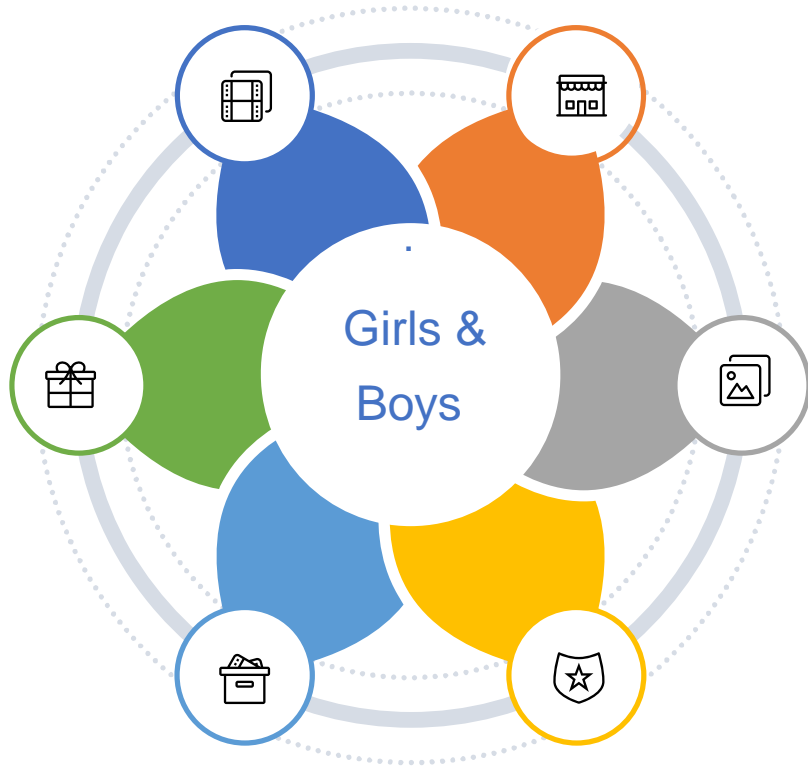
“Our society, our parents and our political leaders are the reasons why youth have no voice today...”

(Kurdish male youth in Duhok, NRC, A Future in the Balance, 2016)

“I was in 8th grade, I was 14 then. I came back from school to find that my parents wanted to marry me off. My pockets were still full of candy and lollipops. I didn’t live my childhood like other children. After I got married my husband and I were displaced to Al- Hasakeh. Then he left me, I was lonely and sad. Everything beautiful in my life was gone. I did not have a goal in life. I’m afraid of war. War is something ugly that took everything beautiful in our lives. But there’s something uglier than war; that is ignorance.” Aisha, 17 years. (UNICEF Syria 2017)”

(“An Overview of Children’s Protection Needs in Syria: This is more than Violence”, 2018)

Holistic Multi-Level Approach to Address GBV



Supporting Holistic Model for GBV Programming

Ecological model | Adolescent/survivor-centered & rights-based | Community-based & working on national systems | Importance of support to girls & women while engaging boys & men



Individual Level

Work with adolescent boys and girls directly



Faith Leaders

Key influential actors to address Child Marriage, Family Violence, etc.



Caregiver Level

Work with both male and female parents/caregivers



Government Stakeholders

Local and national level engagement



Community Level

Wider community awareness and engagement of community groups



Coordination & Other Institutional Actors

Sector WGs, Donors, Foundations

- Promoting holistic multi-leveled GBV programming
- Supporting programming that targets girls and women, as well as engaging boys and men

Ex. ABAAD work with religious leaders and men and boys in Lebanon; DRC Lebanon manual for fathers of adolescent girls

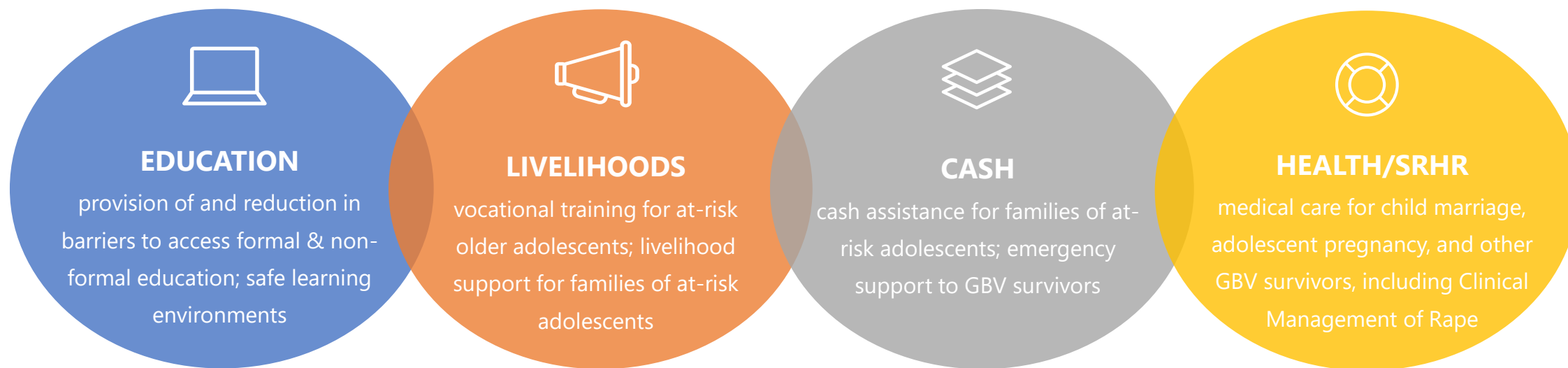


Multi-Sectoral Linkages to Address GBV



Investing in Multi-Sectoral Approach to Complex GBV Concerns

- GBV cannot be addressed by one sector alone as there are many and deeply entrenched contributing factors
- Multi-sectoral model for Child Marriage can minimize risks and provide alternatives for adolescent girls and families



- Investing dedicated resources within different sectors to address GBV
- Investing in projects with a multi-sectoral approach to address GBV concerns

Ex. Inclusion of multisectoral approach in UNICEF & UNFPA Accountability Framework on Child Marriage



World Vision



Multi-Sectoral Linkages to Address GBV



Promoting GBV Mainstreaming through Other Sectors



Continuing to ensure GBV mainstreaming throughout project cycle & across levels:

- For GBV agencies:
GBV mainstreaming activities and technical support across sectors
- For other sector actors & coordination bodies:
GBV mainstreaming within their own sectors



- Dedicating resources for GBV mainstreaming at different levels, including minimizing risks for adolescent girls and boys
- Implementing GBV/Gender Markers & Guidelines: regular follow-up throughout program cycle for scoring and feedback



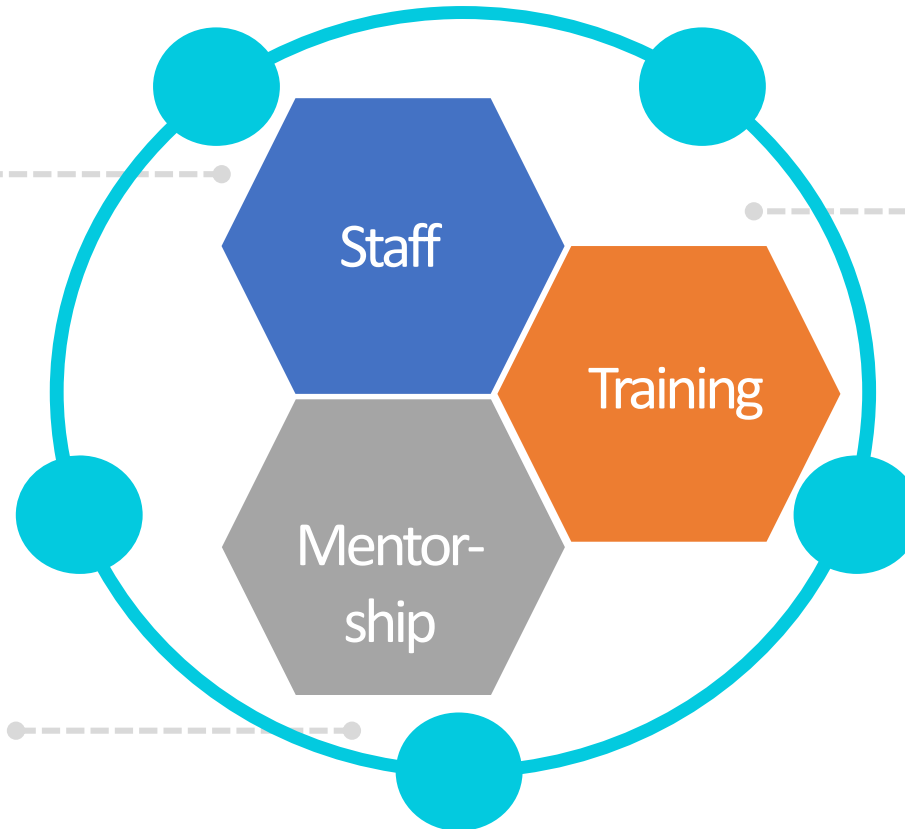
GBV Staffing & Capacity-Building



Increasing Support for Dedicated GBV Staffing

Dedicated, sufficient, and qualified GBV staffing for effective GBV programming due to its sensitivity and complexity

- GBV coordination leads and information management
- GBV technical advisors and program managers
- GBV field staff and service providers



GBV service provision still urgently required to meet immediate needs and ensure service provision that is aligned with guiding principles

Challenges in GBV program staff pipelines and recruitment

Ex. IMC global GBViE Management Phased Training Program

- Supporting dedicated GBV staffing for both targeted GBV programming & GBV mainstreaming at all levels
- Investing in GBV pipelines, mentorship, and rosters

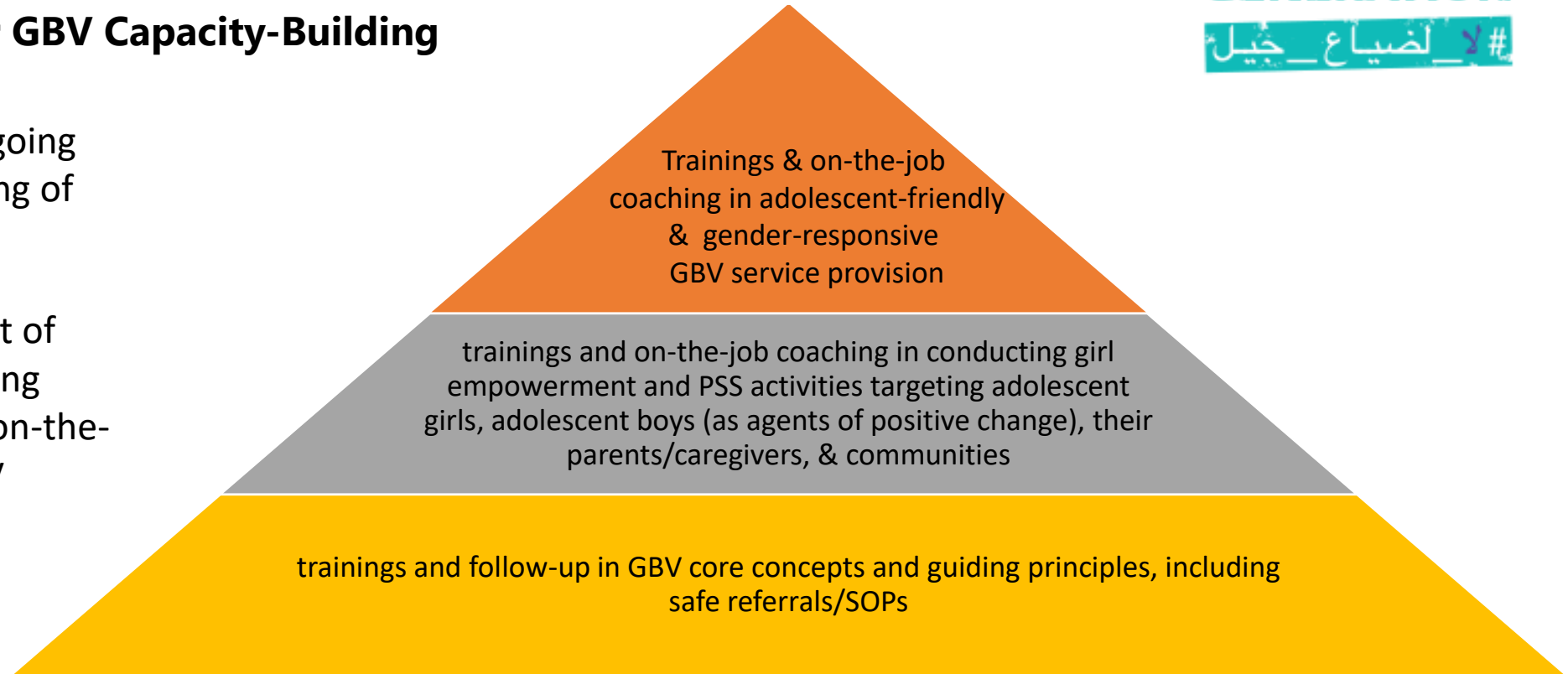


GBV Staffing & Capacity-Building cont'd



Expanding Support for GBV Capacity-Building

- GBV efforts require ongoing sensitization and training of service providers
- Trainings should be part of ongoing capacity-building approaches, including on-the-job supervision for GBV service provision



➤ Continuing to dedicate resources for GBV trainings and on-the-job coaching

Ex. Jordan River Foundation, IRC Lebanon, and GBV SC Turkey training and (peer) coaching models in GBV case management



World Vision



GBV Learning Dialogues & Exchanges



Resourcing & Promotion of GBV Learning Forums



Period of significant GBV innovation in the region in response to the crises



Risk of being “lost” & limited resources for meaningfully sharing across agency & country contexts



Documentation of GBV models and sharing of best practices and strategies, i.e. through workshops, online CoP, staff exchanges/visits, etc.

Ex. Plan & IRC in Jordan integrating GirlShine & Champions of Change model (pending)

Ex. IRC & IMC Safe Spaces Toolkit being developed



- Continuing to invest in documentation & evaluation of GBV program models for lessons learned
- Promoting inter-agency/inter-country partnerships & exchanges
- Supporting other forms of GBV learning and dialogue forums



World Vision



#NOLOST
GENERATION
#لا_لضياع_جيل

Thank you!